

# Michael Versen & Associates

## Landscape Architecture ... Land Planning

299 N. Weisgarber Road Suite 201 Knoxville, TN. 37919  
telephone: 865-588-1331 | fax: 865-251-4086

website: [www.versenassociates.com](http://www.versenassociates.com)  
email: [michael@versenassociates.com](mailto:michael@versenassociates.com)

# Institutional, Health Care, & Commercial

Landscape Architectural services for Health Care, Institutional & Commercial design focus on fulfilling specific program criteria, budget concerns, functional efficiency, site maintenance and image development. Through creative and efficient site planning techniques, maximum use of the development is achieved. Landscape elements of paving, site features, structures, site furnishings, signage, planting and lighting add to the visual enhancement and image of project.







## LIFE CARE CENTERS OF AMERICA – 52 HEALTH CARE CAMPUSES

Independent Living Facilities, Assisted Living Facilities, Skilled Nursing and Alzheimer's Centers – Florida, North Carolina, South Carolina, Tennessee, Georgia, Ohio, Indiana, Idaho, New Mexico, Colorado, California and Washington. Campus master planning and site design, physical therapy, Alzheimer's and healing gardens, courtyards, landscape, irrigation, maintenance programming.

## CORPORATE HEADQUARTERS – LIFE CARE CENTERS OF AMERICA Cleveland, TN

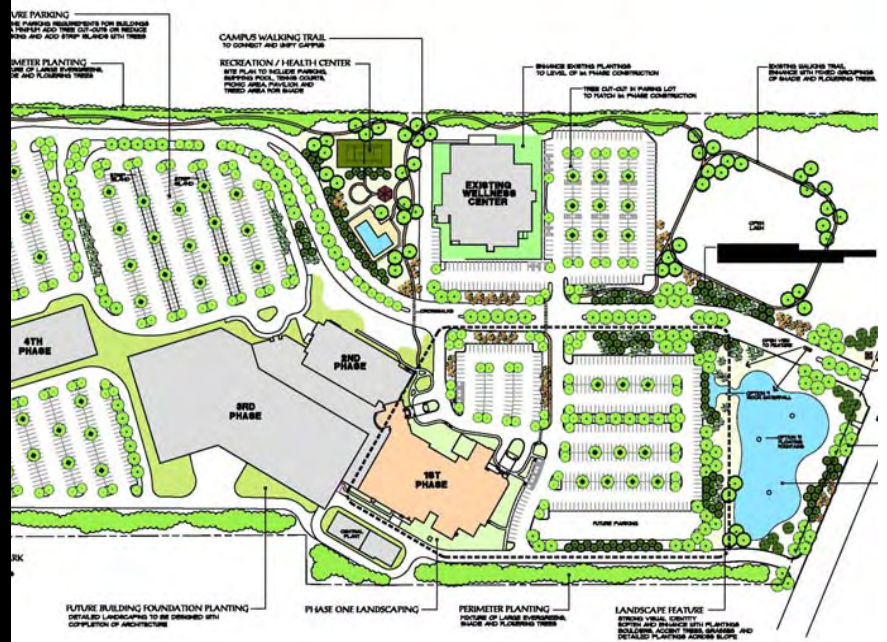
master planning and site design / construction documents for conversion of a shopping center mall property to a corporate campus. Work included new building locations, circulation design (automobile & pedestrian), parking layout, outdoor use areas, large scale fountain and plaza, Landscape and interior mall design.



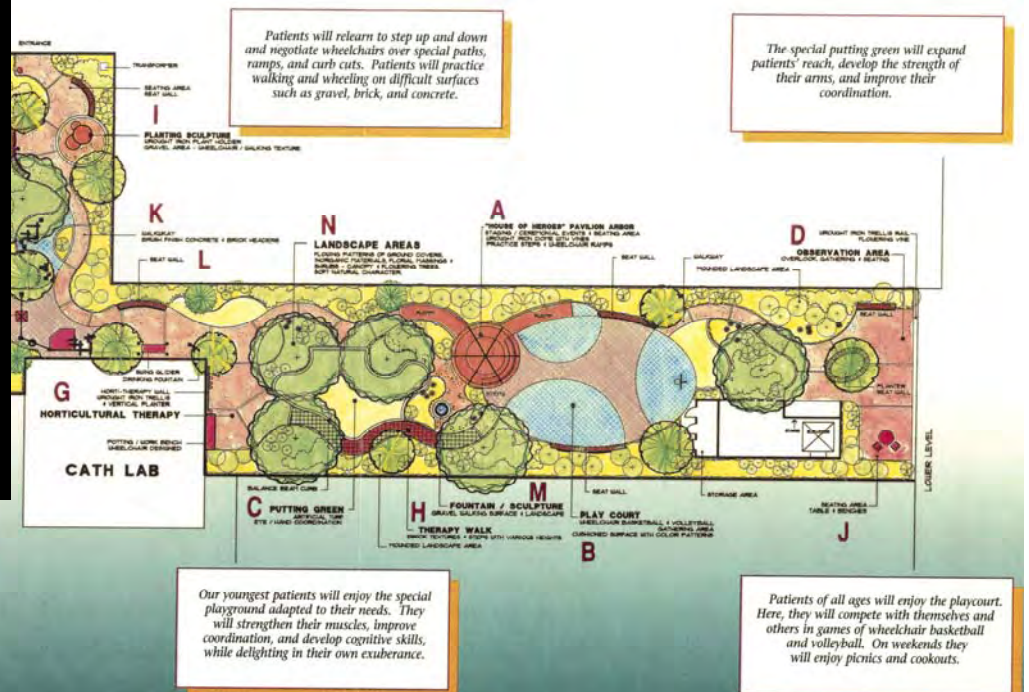
## LIFE CARE CENTERS OF AMERICA – CLEVELAND CONFERENCE CENTER

master landscape plan for conference center campus & central courtyard design.





**ST. MARY'S NORTH MEDICAL CENTER** Knoxville, TN  
Master landscape plan development and construction documents  
for planting & irrigation. MOB courtyard design & construction  
documents.



**PATRICIA NEAL REHABILITATION CENTER ROOFTOP THERAPY PARK** Knoxville, TN  
Master planning, design and construction documents for a rooftop rehabilitation therapy park at Fort Sanders Regional Hospital. Process included workshop programming with rehab physical therapist for this unique facility. Specific design elements evolved for physical therapy included: wheelchair play court (basketball & volleyball), putting green, horticultural work area, special rehab play structures, wheelchair and practice therapy walkways of different surfaces, curbs and ramps. Construction costs of \$575,000 were raised through community donations. Project received the 1993 National Garden Club of America Founders Fund award of \$20,000.





**CLARITY POINTE COURTYARD** Farragut, TN  
master landscape plan and therapy courtyard design and construction documents for exclusive Alzheimer's Facility in the Town of Farragut.



**BAPTIST HEALTH CARE SYSTEMS WEST** Farragut, TN.  
Master landscape plan, courtyard construction documents and irrigation plan. Budget \$730,000

**EAST TENNESSEE BAPTIST HOSPITAL** Knoxville, TN  
campus master landscape plan & site redevelopment maintenance programming

**FORT SANDERS REGIONAL MEDICAL CENTER** Knoxville, TN  
master planning, planting, irrigation, signage & landscape elements

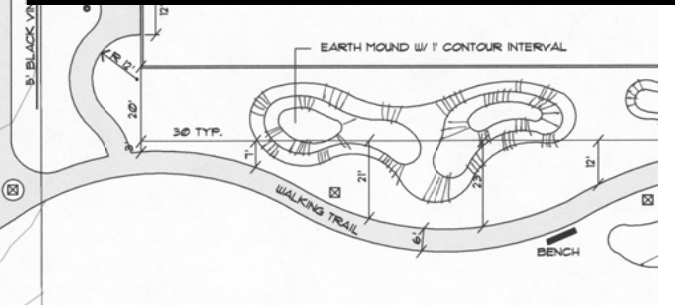
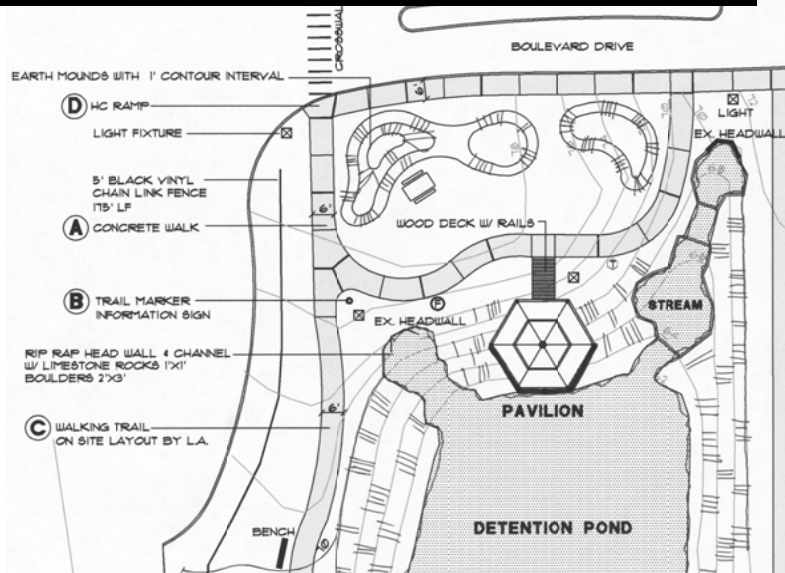
**FORT SANDERS PARK WEST MEDICAL COMPLEX** Knoxville, TN  
design and construction documents, contract administration for campus loop road and new parking areas Budget \$205,000

**FORT SANDERS LOUDON HOSPITAL** Loudon, TN.  
Master landscape plan, courtyard design and irrigation plan.



*Baptist Health Systems West  
Interior Courtyard*





*Bradley Memorial Hospital Walking Trail / Detention*

**THOMPSON CANCER CENTER** Knoxville, TN

**TAKOMA HOSPITAL,** Greeneville, TN

**LA FOLLETTE MEDICAL CENTER** Lafollette, TN

**HOLSTON MEDICAL GROUP** Johnson City, TN

**LAKEWOOD HOSPITAL** Morgan City, LA

**BATON ROUGE GENERAL HOSPITAL** Baton Rouge, LA

**TAU CENTER** Baton Rouge, LA

**CHEMICAL DEPENDENCY UNIT OF ACADIANA**

Lafayette, LA





**KNOXVILLE ORTHOPEDIC CLINIC** Knoxville, TN  
incorporating environmentally friendly and functional “rain gardens”, “bio-detention” parking islands and perimeter swales to collect, channel, absorb and cleanse runoff water.

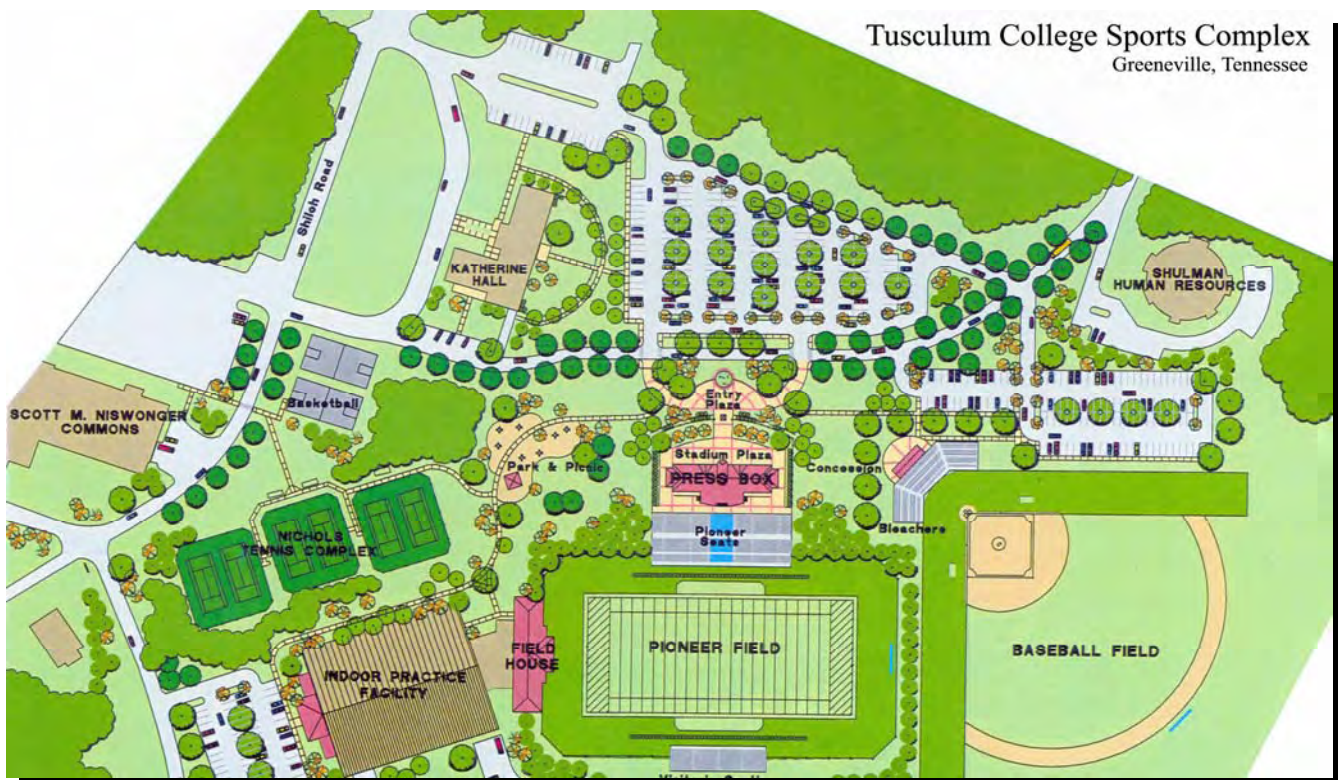
### **LEE UNIVERSITY PEDESTRIAN MALL QUADRANGLE**

Cleveland, TN  
master plan, construction documents and on-site contract administration:  
phase I, amphitheater, plazas & seating areas  
phase II, parking, plazas & seating areas, tennis complex ,  
soccer field & irrigation  
phase III – Ocoee Street / Parker Street mall

**FULTON HIGH SCHOOL** Knoxville, TN  
site redevelopment master plan and construction documents

### **TUSCULUM COLLEGE SPORTS COMPLEX**

Greeneville, TN  
Master plan development for the expansion of the existing football field to include a new plaza, parking, baseball field, indoor soccer facility with landscape and irrigation for the entire sports complex. Landscape and Irrigation construction.







*Hamilton House Courtyard -Sequoyah Hills*



*River Pavilion & Amphitheater  
First United Methodist Church*

### **CHURCH CAMPUSES:**

Selective project listings includes historic restoration, campus master plans, columbarium, specialty gardens and memorials, site design, landscape, irrigation and site elements construction documents.

- FAITH PROMISE CHURCH** Knoxville, TN
- CLEVELAND BAPTIST CHURCH** Cleveland, TN
- CHURCH OF GOD CAMPUS** Cleveland, TN
- CHRIST COVENANT PRESBYTERIAN CHURCH** Farragut, TN
- ROSWELL PRESBYTERIAN CHURCH** Roswell, GA
- NORTH CLEVELAND BAPTIST CHURCH** Cleveland, TN
- FIRST UNITED METHODIST CHURCH** Knoxville, TN
- CONCORD UNITED METHODIST CHURCH** Knoxville, TN
- CUMBERLAND PRESBYTERIAN CHURCH**
- WESTMINISTER PRESBYTERIAN CHURCH** Knoxville, TN
- CEDAR SPRINGS PRESBYTERIAN CHURCH** Knoxville, TN
- FIRST FARRAGUT UNITED METHODIST CHURCH** Farragut, TN
- PROVIDENCE CHURCH** Knoxville, TN
- FAITH LUTHERAN CHURCH** Farragut, TN
- FARRAGUT CHURCH OF CHRIST** Farragut, TN
- WESTMORE CHURCH OF GOD** Cleveland, TN
- GATEWAY CONFERENCE CENTER-CHURCH OF GOD** Gateway, NC
- CORNERSTONE CHURCH** - Knoxville, TN
- LATTER DAY SAINTS** -Sparta, TN. Sevierville, TN.







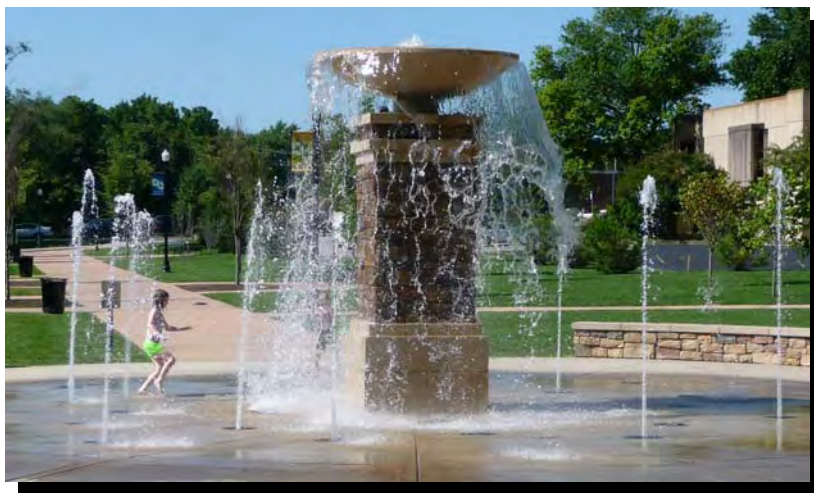
## ELM HILL MARINA Nashville, TN.

Master plan development for commercial recreational land facility including marina, campground, lodge and conference center, cabin rentals, restaurant, park, trails, recreational clubhouse / pool.

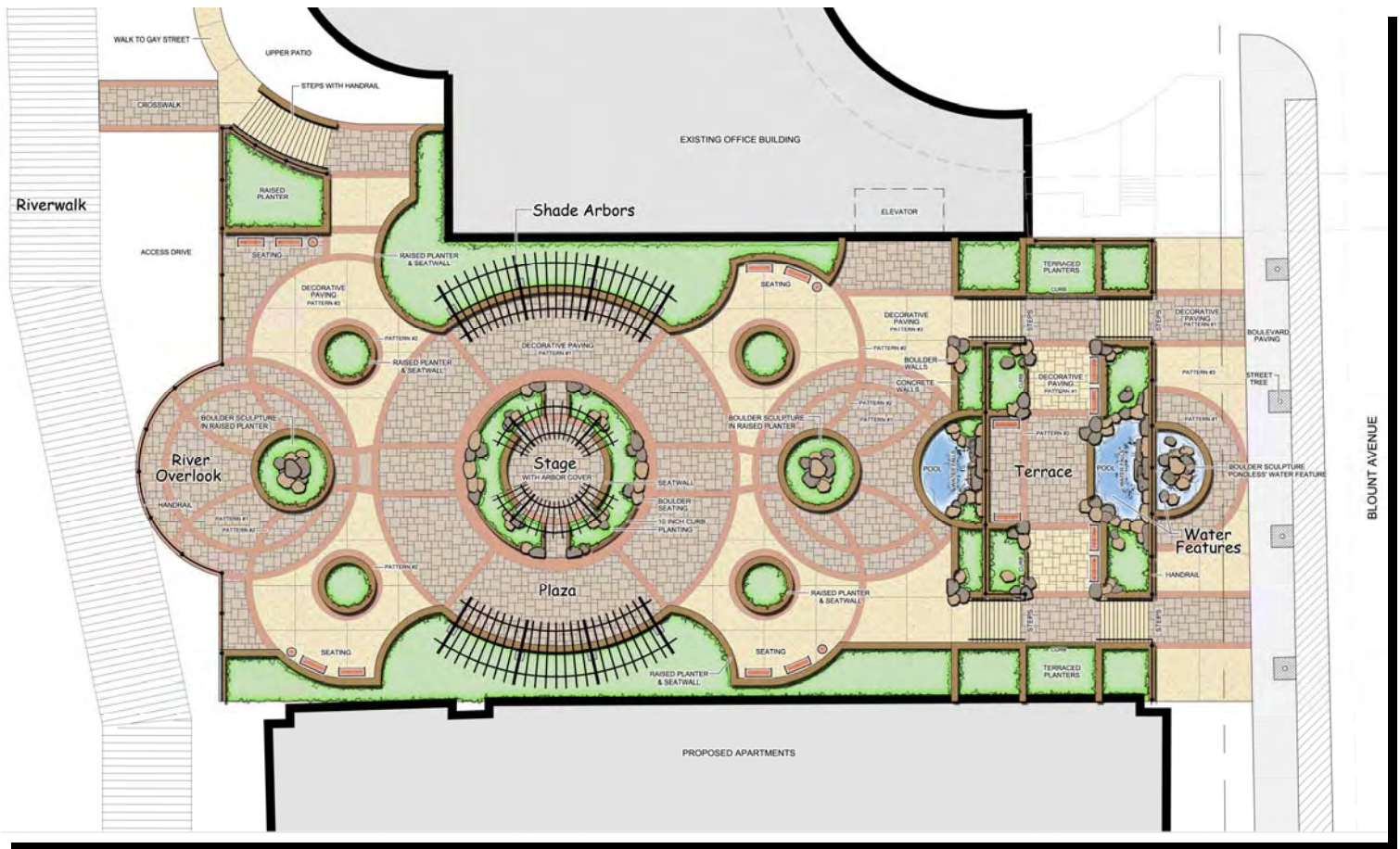


## DOGWOOD PARK Cookeville, TN.

Master plan, community workshops and construction documents for an 18 acre City park. Design included parking, walking trails, central fountain / interactive water play feature, restrooms & concession, staging areas for events, signage, landscape and Irrigation budget - \$750,000







**THE BRIDGES AT RIVERWALK** Knoxville, TN  
 Event terrace concept plan for the mixed use  
 development on the banks of the Tennessee River.











Conceptual Rendering

### **SARASOTA – BRADENTON INTERNATIONAL AIRPORT**

Sarasota, FL.

2200 foot noise abatement Landscape berm with 640 linear ft. sculpture wall \$1,160,000

### **McGHEE TYSON AIRPORT Knoxville, TN**

#### **WEST END LANDSCAPE BUFFER**

1800 foot noise abatement berm for West End Development of airport expansion. Earthen berm, computer renderings and community presentations, construction documents planting / irrigation design and contract administration .

#### **WEST HUNT ROAD LANDSCAPE BUFFER**

greenway trail through landscape buffer including earthen mounds and irrigation

#### **GROUND TRANSPORTATION PARKING LOT EXPANSION**

Landscape and irrigation

#### **CONTINENTAL EXPRESS AIRPORT FACILITY**

site, aesthetic grading, Landscape and irrigation



Constructed Wall

### **SATURN PLANT (UNIVERSITY OF TENN. \ SATURN LINKAGE PROJECT Springhill, TN**

special landscape architectural consultant to the University of Tenn. Ornamental Horticultural Department. As a team leader, the work included master planning and design of the Saturn site along with the establishment of cad system focusing on of site analysis and design. Concept was to utilize exclusively native Tennessee vegetation in the Landscape development to reflect a "regional context" for the project.



### **CHEROKEE PLACE Knoxville, TN**

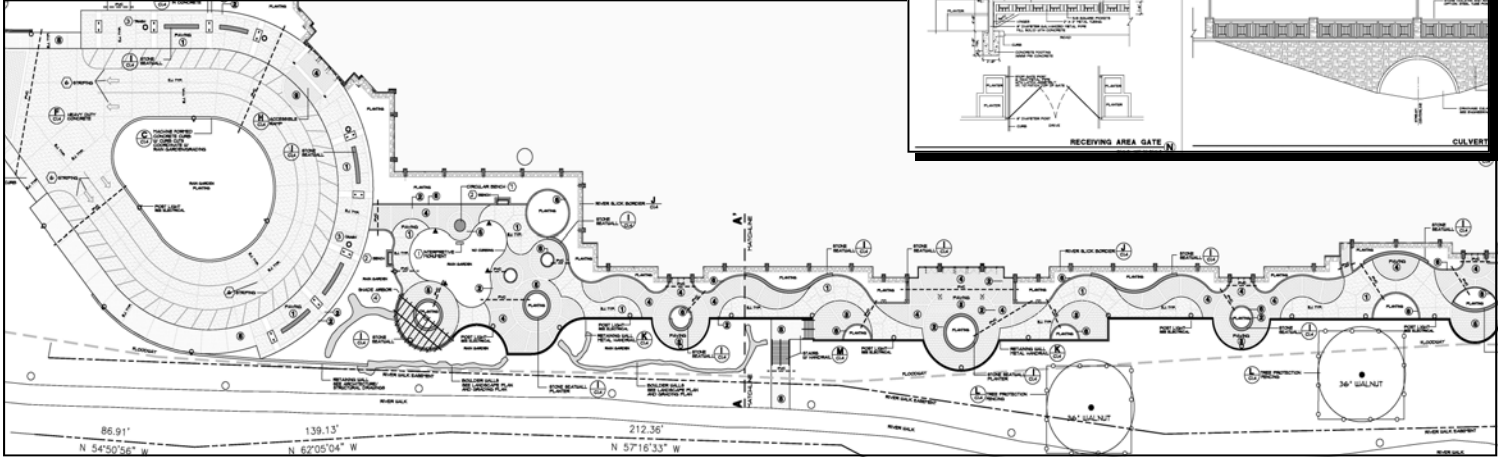
Master site & landscape development for historic office complex. Exterior and interior courtyard renovation landscape & irrigation.





## LeCONTE EVENT CENTER AT PIGEON FORGE

The Center is designed to be the premier convention and community space of the area. Located on the west prong of the Little Pigeon River, the sustainable site design is focused on stream restoration, rain gardens, pervious pavements and a native landscape. Outdoor activity and interpretative spaces are paired with a 750 foot long river promenade featuring organic decorative paving designs.







**HERITAGE POINTE TOWN CENTER** Kingsport, Tennessee  
master plan development for 400 acre regional retail development.

**COMMERCIAL PROJECTS:**

**COSTCO**

**PUBLIX SUPERMARKETS INC.**

**TARGET**

**BOJANGLE'S**

**WALGREENS**

**HOME FEDERAL BANK**

**TVA FEDERAL CREDIT UNION**

**ORNL FEDERAL CREDIT UNION**

**FIRST TENNESSEE BANK**

**ALCOA TN FEDERAL CREDIT UNION**

**UT FEDERAL CREDIT UNION**

**IHOP RESTAURANTS**

**ALDI FOOD STORES**

**LAKE SIDE TAVERN**

**PILOT CORPORATION**

**EARTHFARE**

**STAYBRIDGE SUITES**

**FOOD CITY**



**THE ISLAND IN PIGEON FORGE** Pigeon Forge TN  
Master plan development for destination entertainment & retail development.  
Phase one construction documents and contract administration.

**Michael Versen & Associates**

**Landscape Architecture ... Land Planning**

299 N. Weisgarber Road Suite 201 Knoxville, TN. 37919

telephone: 865-588-1331 | fax: 865-251-4086

website: [www.versenassociates.com](http://www.versenassociates.com)

email: [michael@versenassociates.com](mailto:michael@versenassociates.com)